



# KaMo-System

## WK-Hybrid

### Local Apartment Units

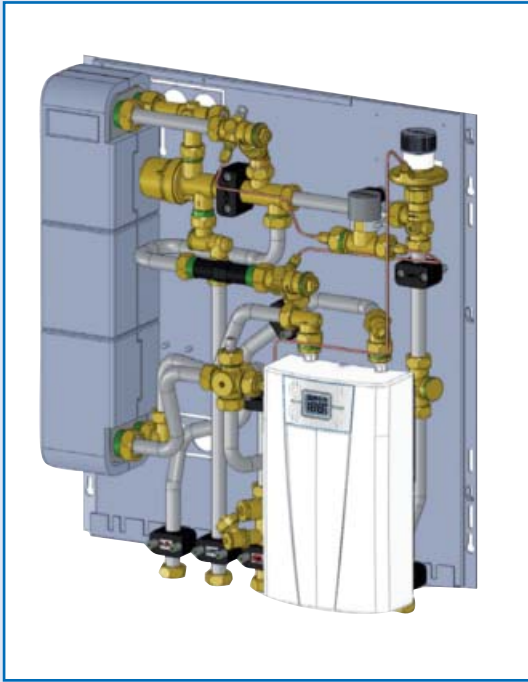
### Heat Interface Units



- Combination of mechanical and electrical on-demand heating
- General reduction of the primary flow temperature
- Secure supply at peak load



**For applications with  
heat pumps**



**Various models for domestic hot water generation:**

- 230 V and 400 V
- Domestic hot water temperature from 42 - 60 °C (depending on unit type)

Energy-saving domestic hot water production at relatively low heating flow temperatures with the aid of electrical on-demand flow heater. The additional energy requirement for domestic hot water production at a heating flow temperature of 40 °C is only 3-5 kW and this is only required at peak load. For the vast majority of operating scenarios, the heating system thus requires a heating flow temperature no higher than 35-40 °C.

**Ideal in combination with heat pumps!**

**Connection diagram**

**Concept:** 2-way flow and return heating system with hybrid apartment unit

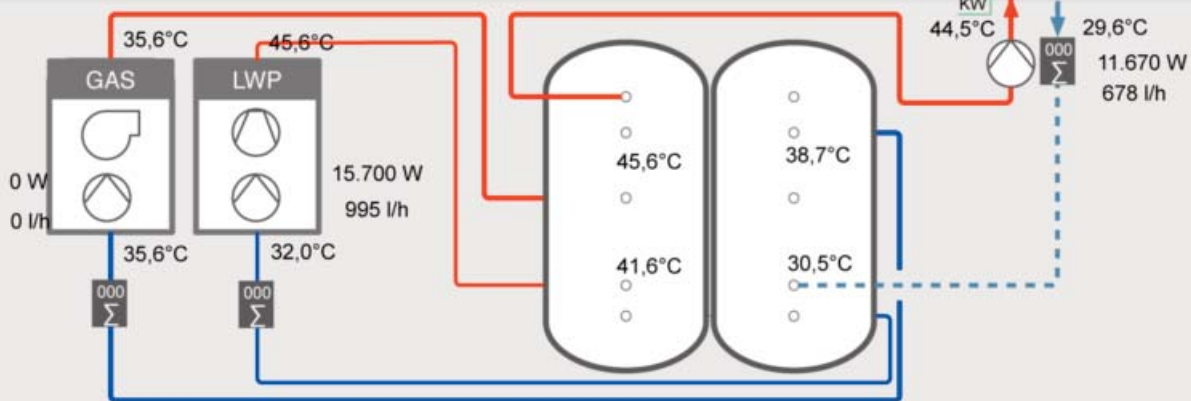
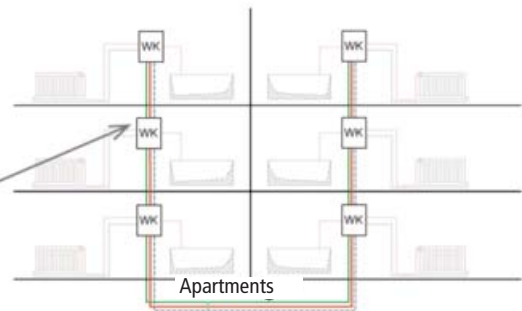
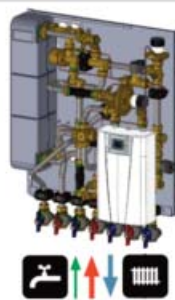
**System temperature:**

Heating flow 38-45 °C, heating return <33 °C

**Domestic hot water**

- decentralized domestic hot water in continuous flow principle (heating flow from 38 °C)
- conforms to DVGW AB W551

**Separate energy metering for each apartment**  
**simple hydraulic balancing**



Gas-fired boiler & air source heat pump

2x storage vessel

Network pump

**KaMo Frischwarmwassersysteme GmbH**

Max-Planck-Straße 11  
89584 Ehingen / Germany

**Phone:** 0049 (0) 73 91 / 70 07-20  
**Fax:** 0049 (0) 73 91 / 70 07-80

**E-Mail:** export@kamo.de  
**Internet:** www.kamo.de